

BEEFIMPACT

Spring 2021



BREEDING INNOVATION



www.cogentuk.com



ABERDEEN-ANGUS

4 RAWBURN BLACKBUSH S420

5 QUAKER HILL DEAD CENTER

6 BLACKHAUGH DIEGO S689

7 MELVIEW GREGOR T271

8 DUNLOUISE EARLSTON S629

9 MORVEN MR ALBERT S792

10 GOULDING PADDY T859

11 GOULDING REAL LEATHER

12 BLACKHAUGH BLACKCAP U858

13 RAWBURN EVOLUTION U837

14 RAWBURN KONG T607

BRITISH BLUE

15 AUCHENLAY HITMAN

16 SPRINGHILL IMPROVEMENT

17 TANAT JACK DANIELS

18 AUCHENLAY JUDGE

19 KERSEY KARATE

20 KERSEY KINGPIN

21 SPRINGHILL LALA

22 SILVERWOOD MAIN MAN

23 MAIDENLANDS MARSHALL

24 KELOWNA MOJO

25 KERSEY NIMROD

26 KERSEY NEWTON

27 KERSEY NICKEL

HEREFORD

28 NETHERHALL 1 JACK P602 (P)

29 NETHERHALL 1 OZ DAFFY M024

LIMOUSIN

30 ELITE LACETTE

31 TOMSCHOICE JET

CULARD CHAROLAIS

32 GOLF

LONGHORN

33 BLACKBROOK BAKEWELL

WAGYU

33 MR HARUKOE



PROVEN – Proven sire with over 100 calving surveys.



4M SEXED – Sire is available in Male SexedULTRA 4M.



ROYALTY – Sire is eligible for royalty fee for any progeny that is registered as pedigree.



MEADOW QUALITY – Meadow quality approved Superior Sire Scheme.



BUITELAAR - Buitelaar approved selected Sire scheme.



HIGH GENETIC SIRE – Tesco integrated beef scheme

NOT FOR PEDIGREE USE

Progeny born from this sire can not be registered as pedigree, for commercial use only.

EARLY LACTATION ONLY

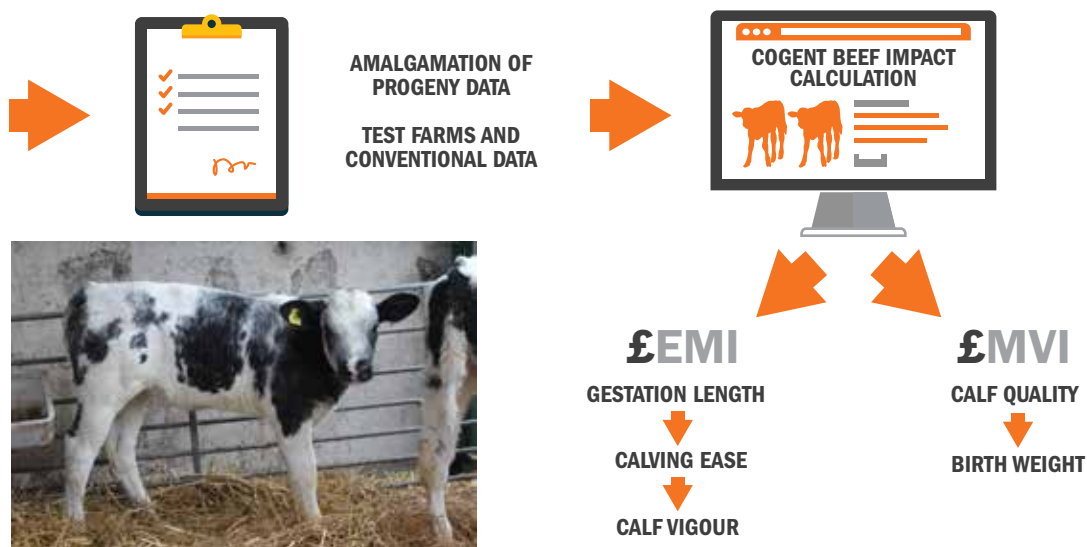
It is recommended that this sire is used in early lactation cows to avoid problems associated with older cows at the point of calving.

COGENT BEEF INDEX

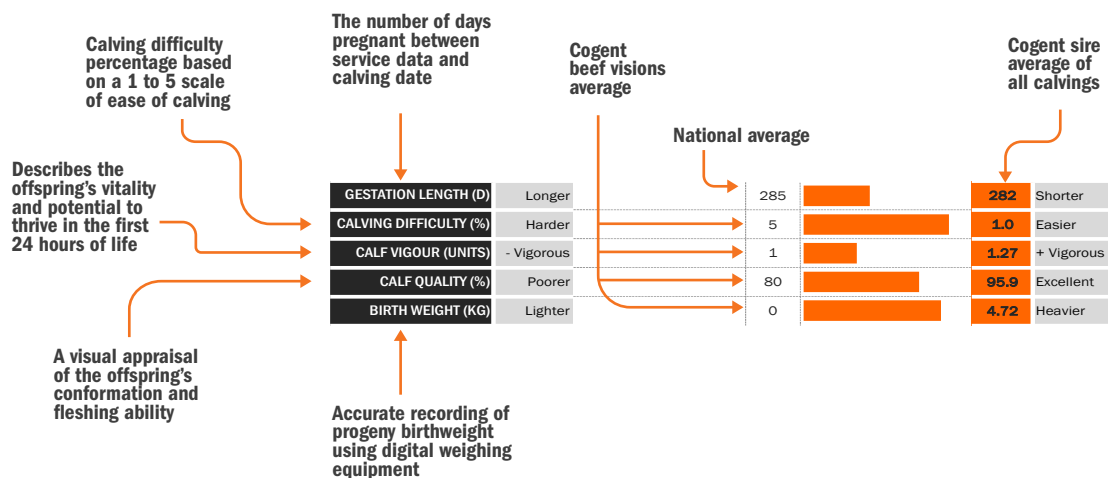
Beef visions, Cogent's bespoke progeny testing program, continues to develop and improve its processes to gain more accurate and reliable data on our bulls, for UK dairy farmers. More semen than ever before is entering a large number of test farms and visions farms UK-wide, with the aim of graduating more Beef bulls with superior genetics. Improvement in the performance recording of both sire and progeny has allowed for larger and more accurate data.

ON-FARM QUALITY ASSESSMENT

The assessment involves recording conformation and overall flesh cover which is scored on a 1-5 scales with 1 being poor and 5 being excellent. The grade is based on muscle formation and fullness around the loin and rump with a slight cover of flesh cover the ribs and shoulders. Raw birthweights are now recorded using approved equipment and are analysed using their deviation from the Cogent breed group average.



UNDERSTANDING OUR DATA



Rawburn BLACK BUSH S420

4M
MALE

Sire: Bushs Strut 756 Dam: DBRL Blackbird 2N Ear Tag: UK562106102420 AI Code: AA1562


CBI
£72.41
EMI
£54.07
MVI
£18.35

LATEST PROGENY PICTURES


R

HIGH GENETIC SIRE



GESTATION LENGTH (D)	Longer	285		282	Shorter
CALVING DIFFICULTY (%)	Harder	5		1.0	Easier
CALF VIGOUR (UNITS)	- Vigorous	1		1.27	+ Vigorous
CALF QUALITY (%)	Poorer	80		95.9	Excellent
BIRTH WEIGHT (KG)	Lighter	0		4.72	Heavier

Quaker Hill DEAD CENTER

Sire: Exar Denver 2002B Dam: Quaker Hill Blackcap OA32 Ear Tag: US4017831035 AI Code: AA1369



CBI
£104.95

EMI
£85.78

MVI
£19.17

LATEST PROGENY PICTURES



R



GESTATION LENGTH (D)	Longer	285		278	Shorter
CALVING DIFFICULTY (%)	Harder	5		1.0	Easier
CALF VIGOUR (UNITS)	- Vigorous	1		1.36	+ Vigorous
CALF QUALITY (%)	Poorer	80		90.4	Excellent
BIRTH WEIGHT (KG)	Lighter	0		-4.95	Heavier

Blackhaugh

DIEGO

S689

Sire: Blackhaugh Ingemar P390 Dam: Blackhaugh Dyna P489 Ear Tag: UK562121301689 AI Code: AA1608



CBI
£60.19

EMI
£53.05

MVI
£7.14

LATEST PROGENY PICTURES



GESTATION LENGTH (D)	Longer	285		282	Shorter
CALVING DIFFICULTY (%)	Harder	5		1.0	Easier
CALF VIGOUR (UNITS)	- Vigorous	1		1.08	+ Vigorous
CALF QUALITY (%)	Poorer	80		91.9	Excellent
BIRTH WEIGHT (KG)	Lighter	0		-1.83	Heavier

NOT FOR PEDIGREE USE

Melview **GREGOR** T271

Sire: Melview Grandville L076 Dam: Melview Gemima N149 Ear Tag:UK311688100271 AI Code: AA1587

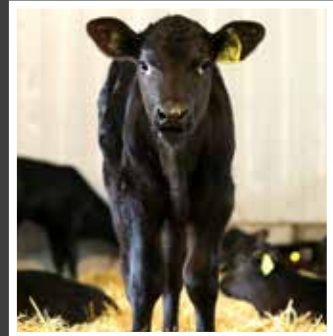


CBI
£66.77

EMI
£61.76

MVI
£5.01

LATEST PROGENY PICTURES



HIGH GENETIC SIRE

GESTATION LENGTH (D)	Longer	285		280	Shorter
CALVING DIFFICULTY (%)	Harder	5		2.1	Easier
CALF VIGOUR (UNITS)	- Vigorous	1		1.03	+ Vigorous
CALF QUALITY (%)	Poorer	80		91.3	Excellent
BIRTH WEIGHT (KG)	Lighter	0		1.27	Heavier

NOT FOR PEDIGREE USE

Dunlouse **EARLSTON** S629

Sire: Dunlouse Raider N504 Dam: Dunlouse Emerald F205 Ear Tag: UK540196200629 AI Code: AA1521



CBI
£72.44

EMI
£55.92

MVI
£16.52

LATEST PROGENY PICTURES



R

GESTATION LENGTH (D)	Longer	285		281	Shorter
CALVING DIFFICULTY (%)	Harder	5		1.1	Easier
CALF VIGOUR (UNITS)	- Vigorous	1		1.29	+ Vigorous
CALF QUALITY (%)	Poorer	80		88.2	Excellent
BIRTH WEIGHT (KG)	Lighter	0		-4.27	Heavier

Morven **MR ALBERT** S792



Sire: Sydgen CC & 7 (SS) (IMP) Dam: Coldstream Miss Annie 124W Ear Tag: UK21115603792 AI Code: AA1595



CBI
£76.19

EMI
£65.22

MVI
£10.97

LATEST PROGENY PICTURES



GESTATION LENGTH (D)	Longer	285		279	Shorter
CALVING DIFFICULTY (%)	Harder	5		2.7	Easier
CALF VIGOUR (UNITS)	- Vigorous	1		1.20	+ Vigorous
CALF QUALITY (%)	Poorer	80		82.8	Excellent
BIRTH WEIGHT (KG)	Lighter	0		-2.84	Heavier

NOT FOR PEDIGREE USE

Goulding **PADDY** T859



Sire: Nightingale Ploughman G376 Dam: Goulding Patriot M531 Ear Tag: IE72214806880859 AI Code: AA1564



CBI
£56.05

EMI
£51.32

MVI
£4.73

LATEST PROGENY PICTURES



GESTATION LENGTH (D)	Longer	285		280	Shorter
CALVING DIFFICULTY (%)	Harder	5		4.1	Easier
CALF VIGOUR (UNITS)	- Vigorous	1		1.16	+ Vigorous
CALF QUALITY (%)	Poorer	80		88.0	Excellent
BIRTH WEIGHT (KG)	Lighter	0		-1.18	Heavier

NOT FOR PEDIGREE USE

Goulding REAL LEATHER

Sire: Retties JFK M195 Dam: Goulding Graceful Patriot K454 Ear Tag: 20184043(IR)44 AI Code: AA1649



CBI
£43.96

EMI
£41.25

MVI
£2.71

LATEST PROGENY PICTURES



GESTATION LENGTH (D)	Longer	285	282	Shorter
CALVING EASE (%)	Harder	5	3.8	Easier
CALF VIGOUR (UNITS)	- Vigorous	1	1.42	+ Vigorous
CALF QUALITY (%)	Poorer	80	93.1	Excellent
BIRTH WEIGHT (KG)	Lighter	0	0.64	Heavier

NOT FOR PEDIGREE USE

Blackhaugh

BLACKCAP

U858

Sire: KC Bennett Absolute SS Dam: Thomas Blackcap 4845 Ear Tag: UK562121401858 AI Code: AA1708



CBI

£76.80

EMI

£74.82

MVI

£1.98

LATEST PROGENY PICTURES



GESTATION LENGTH (D)	Longer	285		278	Shorter
CALVING DIFFICULTY (%)	Harder	5		1.7	Easier
CALF VIGOUR (UNITS)	- Vigorous	1		1.73	+ Vigorous
CALF QUALITY (%)	Poorer	80		99.0	Excellent
BIRTH WEIGHT (KG)	Lighter	0		0.44	Heavier

NOT FOR PEDIGREE USE

Rawburn **EVOLUTION** U837

Sire: Rawburn Fast Ball P844 Dam: Rawburn Evening Star G705 Ear Tag: UK562106502837 AI Code: AA1693



CBI
£39.39

EMI
£34.72

MVI
£4.67

LATEST PROGENY PICTURES



HIGH GENETIC SIRE

GESTATION LENGTH (D)	Longer	285		283	Shorter
CALVING DIFFICULTY (%)	Harder	5		3.6	Easier
CALF VIGOUR (UNITS)	- Vigorous	1		1.59	+ Vigorous
CALF QUALITY (%)	Poorer	80		99.0	Excellent
BIRTH WEIGHT (KG)	Lighter	0		1.13	Heavier

NOT FOR PEDIGREE USE

Rawburn

KONG

T607

Sire: Rawburn Boss Hogg N630 Dam: Rawburn Kinannie J993 Ear Tag: UK652106602607 AI Code: AA1606



CBI

£52.10

EMI

£51.56

MVI

£0.54

LATEST PROGENY PICTURES



GESTATION LENGTH (D)	Longer	285		281	Shorter
CALVING DIFFICULTY (%)	Harder	5		2.1	Easier
CALF VIGOUR (UNITS)	- Vigorous	1		1.38	+ Vigorous
CALF QUALITY (%)	Poorer	80		91.3	Excellent
BIRTH WEIGHT (KG)	Lighter	0		0.09	Heavier

NOT FOR PEDIGREE USE

Auchenlay **HITMAN**

Sire: Mountjoy Utopia Dam: Auchenlay Bianca Ear Tag: UK542740 500435 AI Code: BB1316



CBI
£61.21

EMI
£51.20

MVI
£10.01

LATEST PROGENY PICTURES



R



GESTATION LENGTH (D)	Longer	285		280	Shorter
CALVING DIFFICULTY (%)	Harder	5		3.8	Easier
CALF VIGOUR (UNITS)	- Vigorous	1		1.45	+ Vigorous
CALF QUALITY (%)	Poorer	80		91.4	Excellent
BIRTH WEIGHT (KG)	Lighter	0		2.85	Heavier
CALF COLOUR (%)	Poorer	80		87	Desirable

SUITABLE FOR USE IN EARLY LACTATION ONLY

Springhill

IMPROVEMENT

Sire: Springhill Fabulous Dam: Springhill Elsie Ear Tag: UK933262903824 AI Code: BB1381



CBI
£77.61

EMI
£60.44

MVI
£17.17

LATEST PROGENY PICTURES



R



GESTATION LENGTH (D)	Longer	285		280	Shorter
CALVING DIFFICULTY (%)	Harder	5		2.8	Easier
CALF VIGOUR (UNITS)	- Vigorous	1		1.49	+ Vigorous
CALF QUALITY (%)	Poorer	80		90.7	Excellent
BIRTH WEIGHT (KG)	Lighter	0		4.98	Heavier
CALF COLOUR (%)	Poorer	80		73	Desirable

SUITABLE FOR USE IN EARLY LACTATION ONLY

Tanat JACK DANIELS

Sire: Harpon De L'Orgelot Dam: Whiterock Diamond Ear Tag: UK706191100832 AI Code: BB1394



CBI
£50.42

EMI
£36.32

MVI
£14.10

LATEST PROGENY PICTURES



R

GESTATION LENGTH (D)	Longer	285		282	Shorter
CALVING DIFFICULTY (%)	Harder	5		4.0	Easier
CALF VIGOUR (UNITS)	- Vigorous	1		1.50	+ Vigorous
CALF QUALITY (%)	Poorer	80		95.5	Excellent
BIRTH WEIGHT (KG)	Lighter	0		4.04	Heavier
CALF COLOUR (%)	Poorer	80		94	Desirable

SUITABLE FOR USE IN EARLY LACTATION ONLY

Auchenlay **JUDGE**

Sire: Tamhorn Ethan Dam: Auchenlay Eve Ear Tag: UK542740300461 AI Code: BB1464



CBI
£54.77

EMI
£45.29

MVI
£9.48

LATEST PROGENY PICTURES



GESTATION LENGTH (D)	Longer	285		283	Shorter
CALVING DIFFICULTY (%)	Harder	5		1.0	Easier
CALF VIGOUR (UNITS)	- Vigorous	1		1.70	+ Vigorous
CALF QUALITY (%)	Poorer	80		78.0	Excellent
BIRTH WEIGHT (KG)	Lighter	0		-2.77	Heavier
CALF COLOUR (%)	Poorer	80		78	Desirable

NOT FOR PEDIGREE USE

Kersey KARATE

Sire: Bringlee Ecstasy Dam: Kersey Frost Ear Tag: UK222596200980 AI Code: BB1440



CBI
£81.24

EMI
£73.62

MVI
£7.62

LATEST PROGENY PICTURES



GESTATION LENGTH (D)	Longer	285		279	Shorter
CALVING DIFFICULTY (%)	Harder	5		1.0	Easier
CALF VIGOUR (UNITS)	- Vigorous	1		1.63	+ Vigorous
CALF QUALITY (%)	Poorer	80		80.6	Excellent
BIRTH WEIGHT (KG)	Lighter	0		2.20	Heavier
CALF COLOUR (%)	Poorer	80		67	Desirable

NOT FOR PEDIGREE USE

Kersey **KINGPIN**



Sire: Auchenlay Echo Dam: Blue Mist Blossom Ear Tag: UK222596701013 AI Code: BB1489



CBI
£65.92

EMI
£61.48

MVI
£4.44

LATEST PROGENY PICTURES



GESTATION LENGTH (D)	Longer	285		280	Shorter
CALVING DIFFICULTY (%)	Harder	5		2.3	Easier
CALF VIGOUR (UNITS)	- Vigorous	1		1.56	+ Vigorous
CALF QUALITY (%)	Poorer	80		87.8	Excellent
BIRTH WEIGHT (KG)	Lighter	0		-1.28	Heavier
CALF COLOUR (%)	Poorer	80		88	Desirable

NOT FOR PEDIGREE USE

Springhill LALA

Sire: Winston Van Perenof Dam: Springhill Cathy Ear Tag: UK933293500157 AI Code: BB1558



CBI
£70.87

EMI
£69.72

MVI
£1.16

LATEST PROGENY PICTURES



GESTATION LENGTH (D)	Longer	285		279	Shorter
CALVING DIFFICULTY (%)	Harder	5		1.9	Easier
CALF VIGOUR (UNITS)	- Vigorous	1		1.25	+ Vigorous
CALF QUALITY (%)	Poorer	80		97.5	Excellent
BIRTH WEIGHT (KG)	Lighter	0		-0.27	Heavier
CALF COLOUR (%)	Poorer	80		82	Desirable

NOT FOR PEDIGREE USE

Silverwood **MAIN MAN**



Sire: Auchenlay Hitman Dam: Grangeford Hazel Ear Tag: UK942210313797 AI Code: BB1621



CBI
£55.97

EMI
£55.39

MVI
£0.58

LATEST PROGENY PICTURES



GESTATION LENGTH (D)	Longer	285		280	Shorter
CALVING DIFFICULTY (%)	Harder	5		2.8	Easier
CALF VIGOUR (UNITS)	- Vigorous	1		1.29	+ Vigorous
CALF QUALITY (%)	Poorer	80		91.1	Excellent
BIRTH WEIGHT (KG)	Lighter	0		-0.12	Heavier
CALF COLOUR (%)	Poorer	80		87	Desirable

NOT FOR PEDIGREE USE

Maidenlands MARSHALL

Sire: Twyning Ash Ukulele Dam: 5677 T Hof Tef Zilverberg Ear Tag: UK104493500509 AI Code: BB1578



CBI
£68.46

EMI
£64.18

MVI
£4.27

LATEST PROGENY PICTURES



GESTATION LENGTH (D)	Longer	285		280	Shorter
CALVING DIFFICULTY (%)	Harder	5		1.6	Easier
CALF VIGOUR (UNITS)	- Vigorous	1		1.13	+ Vigorous
CALF QUALITY (%)	Poorer	80		99.2	Excellent
BIRTH WEIGHT (KG)	Lighter	0		-1.12	Heavier
CALF COLOUR (%)	Poorer	80		99	Desirable

NOT FOR PEDIGREE USE

Kelowna **MOJO**



Sire: Kersey Geronimo Dam: Kelowna Brandy Ear Tag: UK102530701212 AI Code: BB1588



CBI
£39.75

EMI
£36.47

MVI
£3.28

LATEST PROGENY PICTURES



GESTATION LENGTH (D)	Longer	285		285	Shorter
CALVING DIFFICULTY (%)	Harder	5		1.0	Easier
CALF VIGOUR (UNITS)	- Vigorous	1		1.27	+ Vigorous
CALF QUALITY (%)	Poorer	80		91.1	Excellent
BIRTH WEIGHT (KG)	Lighter	0		-0.89	Heavier
CALF COLOUR (%)	Poorer	80		93	Desirable

NOT FOR PEDIGREE USE

Kersey **NIMROD**

Sire: Maidenlands Force Dam: Kersey Flash Ear Tag: UK222596701160 AI Code: BB1674



CBI
£65.16

EMI
£58.86

MVI
£6.30

LATEST PROGENY PICTURES



GESTATION LENGTH (D)	Longer	285		281	Shorter
CALVING DIFFICULTY (%)	Harder	5		1.0	Easier
CALF VIGOUR (UNITS)	- Vigorous	1		1.55	+ Vigorous
CALF QUALITY (%)	Poorer	80		86.8	Excellent
BIRTH WEIGHT (KG)	Lighter	0		1.80	Heavier
CALF COLOUR (%)	Poorer	80		86	Desirable

NOT FOR PEDIGREE USE

Kersey **NEWTON**

Sire: Bringlee Ecstasy Dam: Kersey Flash Ear Tag: UK222596301142 AI Code: BB1672



CBI
£84.18

EMI
£78.32

MVI
£5.85

LATEST PROGENY PICTURES



GESTATION LENGTH (D)	Longer	285		278	Shorter
CALVING DIFFICULTY (%)	Harder	5		2.1	Easier
CALF VIGOUR (UNITS)	- Vigorous	1		1.00	+ Vigorous
CALF QUALITY (%)	Poorer	80		95.0	Excellent
BIRTH WEIGHT (KG)	Lighter	0		1.66	Heavier
CALF COLOUR (%)	Poorer	80		68	Desirable

NOT FOR PEDIGREE USE

Kersey **NICKEL**

Sire: Bringlee Ecstasy Dam: Kersey Flash Ear Tag: UK222596201141 AI Code: BB1673



CBI
£74.62

EMI
£66.88

MVI
£7.73

LATEST PROGENY PICTURES



GESTATION LENGTH (D)	Longer	285		280	Shorter
CALVING DIFFICULTY (%)	Harder	5		1.0	Easier
CALF VIGOUR (UNITS)	- Vigorous	1		1.40	+ Vigorous
CALF QUALITY (%)	Poorer	80		98.6	Excellent
BIRTH WEIGHT (KG)	Lighter	0		2.20	Heavier
CALF COLOUR (%)	Poorer	80		66	Desirable

NOT FOR PEDIGREE USE

SUITABLE FOR USE IN EARLY LACTATION ONLY

Netherhall 1

JACK

P602(P)

Sire: Wirruna Jack J12 Dam: Netherhall 1 Oz Tigress M018 Ear Tag: UK103719602602 AI Code: H9322



CBI

£76.43

EMI

£49.23

MVI

£27.20

LATEST PROGENY PICTURES



R

GESTATION LENGTH (D)	Longer	285		283	Shorter
CALVING DIFFICULTY (%)	Harder	5		1.0	Easier
CALF VIGOUR (UNITS)	- Vigorous	1		1.24	+ Vigorous
CALF QUALITY (%)	Poorer	80		81.0	Excellent
BIRTH WEIGHT (KG)	Lighter	0		-7.06	Heavier

Netherhall 1

OZ DAFFY

M024

Sire: Wirruna Daffy D1 Dam: Wirruna Last Day E163 Ear Tag: UK103719202024 AI Code: H9375



CBI

£52.76

EMI

£35.42

MVI

£17.34

LATEST PROGENY PICTURES



R



GESTATION LENGTH (D)	Longer	285	285	Shorter
CALVING DIFFICULTY (%)	Harder	5	1.0	Easier
CALF VIGOUR (UNITS)	- Vigorous	1	1.18	+ Vigorous
CALF QUALITY (%)	Poorer	80	86.7	Excellent
BIRTH WEIGHT (KG)	Lighter	0	-4.51	Heavier

Elite **LACETTE**



Sire: Ampertaine Foreman Dam: Ardlea Gig Ear Tag: IE221062721390 AI Code: LN2755



CBI
£26.86

EMI
£14.71

MVI
£12.15

LATEST PROGENY PICTURES



R



GESTATION LENGTH (D)	Longer		285		287	Shorter
CALVING DIFFICULTY (%)	Harder		5		1.7	Easier
CALF VIGOUR (UNITS)	- Vigorous		1		1.39	+ Vigorous
CALF QUALITY (%)	Poorer		80		93.9	Excellent
BIRTH WEIGHT (KG)	Lighter		0		3.48	Heavier

SUITABLE FOR USE IN EARLY LACTATION ONLY

Tomschoice **JET**

Sire: Kaprico Eravelle Dam: Tomschoice Diamante Ear Tag: UK124148100307 AI Code: LN2561



CBI
£14.35

EMI
£10.88

MVI
£3.46

LATEST PROGENY PICTURES



R



GESTATION LENGTH (D)	Longer	<div></div>	285	<div></div>	286	Shorter
CALVING DIFFICULTY (%)	Harder		5	<div></div>	3.2	Easier
CALF VIGOUR (UNITS)	- Vigorous		1	<div></div>	1.56	+ Vigorous
CALF QUALITY (%)	Poorer		80	<div></div>	92.8	Excellent
BIRTH WEIGHT (KG)	Lighter		0	<div></div>	0.94	Heavier

SUITABLE FOR USE IN EARLY LACTATION ONLY

GOLF

Sire: Vaudo Dam: Delta Ear Tag: FR4241721964 AI Code: CH4126



CBI
£69.63

EMI
£44.39

MVI
£25.24

LATEST PROGENY PICTURES



GESTATION LENGTH (D)	Longer	285		284	Shorter
CALVING DIFFICULTY (%)	Harder	5		1.0	Easier
CALF VIGOUR (UNITS)	- Vigorous	1		1.27	+ Vigorous
CALF QUALITY (%)	Poorer	80		99.0	Excellent
BIRTH WEIGHT (KG)	Lighter	0		7.34	Heavier

NOT FOR PEDIGREE USE

Blackbrook **BAKEWELL**

Sire: Blackbrook Richester Dam: Blackbrook Zoella VG85 Ear Tag: UK200538101026 AI Code: LH0914



We are excited to be able to offer semen from this exceptional bull. The Blackbrook herd have been selected and developed on natural fleshing cattle that grow quickly and suit every system. Bakewell, is an exceptional bull that displays outstanding length over his loin and muscle development throughout. Bakewell is full brother to the renowned Blackbrook Philosopher. This bull will provide exceptional calf quality with easy calving credentials as you would expect from this breed.



WAGYU

MR HARUKOE

Sire: World K's Haruki 2 Dam: CHR MS Sanjirou 320 Ear Tag: DE0360343401 AI Code: MS0057



Mr Harukoe has a very special pedigree. His sire is World K's Haruki 2, one of the original Japanese bulls who was exported from Japan to USA in 1993. This bull was recognised for exceptional carcase quality. His maternal grand sire is Sanjirou, who is one of the great marbling bulls. We expect this bull to provide exceptional marbling with outstanding carcase conformation.



PATHWAY

What are the advantages for the dairy farmer?

Pathway Farming are an integrated beef company, specialising in the production of high quality Angus beef for premium retailers. Cogent and Pathway partnered in 2019 to develop a programme which will accelerate genetic improvements within the breed.

Gain access to competitively priced exclusive Aberdeen Angus bulls from Cogent, proven to have short gestation length and low birth

weights, we collect direct from farms in TB-free, TB4 and TB1 areas (Male HF bull calves also purchased in TB1 areas) with payment via BACS and no commission. Male SexedULTRA 4M is available on selected bulls. A major benefit of working with us is our long term, very competitive, fixed price contracts, available for up to 24 months and we also offer quality benchmarked feedback on calf performance through to finishing.

**COGENT ANGUS X CALVES ARE THE PERFECT FIT
FOR PATHWAY FARMING SUPPLY CHAIN.**



What are we looking for?

- **Fit, healthy calves, minimum 43kg weight** (12-40 days of age)
- **HF type cows, minimum bodyweight 550kg**
- **Good colostrum management**
- **Known health status of herd**
- **Sire Ear Tag typed onto passports**
- **AYR or block calving herds**

Whether you have Aberdeen Angus calves available now or are interested in switching over in the future, get in touch.

Email: info@pathwayfarming.co.uk **Tel:** 01989 495101

 @pathwayfarming

 @Pathway _Farming



TRIPLE IMPACT EMI

COGENT EASE OF MANAGEMENT mix (£EMI) is aimed at customers wanting to capitalise on live and vigorous calves born without assistance.

Fertility enhancing semen that features three bulls with variations in semen maturation rates.

All bulls featured in this Triple Impact mix score above £40 on the EMI value.

Selecting Cogent Beef sires ranking highly for £EMI gives dairy cows the best chance to have a profitable lactation.

Provides consistent quality calves that are easily managed and full of vitality.



www.cogentuk.com

ALL TRIPLE IMPACT STRAWS HAVE THE RELEVANT SIRE IDENTIFICATION PRINTED ON THE STRAWS. THIS SHOULD BE RECORDED AT THE TIME OF SERVICE.



TRIPLE IMPACT HEREFORD

Cogent Triple Impact Hereford is aimed at customers wanting to capitalise on live and vigorous calves born without assistance.

Fertility enhancing semen that features three bulls with variations in semen maturation rates.

Selecting Cogent Beef sires ranking highly for £EMI gives dairy cows the best chance to have a profitable lactation.

Provides consistent quality calves that are easily managed and full of vitality.

**TRIPLE IMPACT NATIVE
(ABERDEEN ANGUS, BEEF SHORTHORN, HEREFORD)
IS NOW AVAILABLE, OFFERING A GREAT COMBINATION OF
CALVING EASE AND CALF QUALITY NATIVE BULLS.**

ALL TRIPLE IMPACT STRAWS HAVE THE RELEVANT SIRE IDENTIFICATION PRINTED ON THE STRAWS. THIS SHOULD BE RECORDED AT THE TIME OF SERVICE.



TRIPLE IMPACT ANGUS

Is aimed at customers wanting to capitalise on live vigorous Aberdeen Angus calves born without assistance.

Fertility enhancing semen that features three bulls with variations in maturation rates.

This product has been created for the UK Dairy farmer and will provide our customers with consistent calving ease.

Quality calves, that are easily born with short gestation lengths.



www.cogentuk.com

ALL TRIPLE IMPACT STRAWS HAVE THE RELEVANT SIRE IDENTIFICATION PRINTED ON THE STRAWS. THIS SHOULD BE RECORDED AT THE TIME OF SERVICE.



NOT FOR PEDIGREE USE

TRIPLE IMPACT ANGUS SUPER EASY

Fertility enhancing semen that features three bulls with variations in semen maturation rates.

All bulls featured in this Triple Impact mix score above £40 on the EMI value.

Selecting Cogent Beef sires ranking highly for £EMI gives dairy cows the best chance to have a profitable lactation.

Provides consistent quality calves that are easily managed and full of vitality.



www.cogentuk.com

ALL TRIPLE IMPACT STRAWS HAVE THE RELEVANT SIRE IDENTIFICATION PRINTED ON THE STRAWS. THIS SHOULD BE RECORDED AT THE TIME OF SERVICE.

AHDB NATIONAL BEEF EVALUATIONS

THE AHDB NATIONAL BEEF EVALUATIONS PROVIDE A SET OF FIVE ESTIMATED BREEDING VALUES (EBVS) THAT ALLOW BREEDERS TO DIRECTLY SELECT BULLS BASED ON THEIR GENETIC POTENTIAL FOR CARCASE PERFORMANCE. THESE FIVE NEW EBVS ARE :

- CARCASE WEIGHT (KG)
- CARCASE CONFORMATION (EUROP CLASSIFICATION)
- CARCASE FAT CLASS (EUROP CLASSIFICATION)
- SLAUGHTER AGE (DAYS)
- AVERAGE DAILY CARCASE GAIN (KG)

THESE EBVS ARE GENERATED BY COMBINING LARGE VOLUMES OF NATIONAL DATA FROM BCMS, PROCESSORS AND BREED SOCIETIES, GIVING HIGH ACCURACY FIGURES FOR BULLS THAT HAVE HAD PROGENY SLAUGHTERED.

2021 Proposed Superior Sires Bulls			AHDB Evaluations					Sexed Semen
Bull Name	Breed	Bull Ear Tag Number	Days to slaughter	Carcass weight	Carcass conformation	Carcass fat class	ADCG	Male Sexed ULTRA 4M
Rawburn Black Bush S420	AA	UK562106102420	-0.22	0.43	-0.10	0.78	0	YES
Blackhaugh Diego S689	AA	UK562121301689	-15.27	3.7	-0.58	1.02	0.02	
Melview Gregor T271	AA	UK311688100271	-8.47	4.16	-1.1	-0.55	0.01	
Dunlouse Earlston S629	AA	UK540196200629	-18.31	-24.44	0.39	2.54	-0.02	
Quaker Hill Dead Center	AA	US4017831035	-48.85	-12.96	-0.59	0.01	0.01	
Auchenlay Hitman	BB	UK933262903824	-12.77	5.21	1.82	-3.70	0.01	
Springhill Improvement	BB	UK102530100996	-35.73	5.30	2.24	-3.53	0.03	
Tanat Jack Daniels	BB	UK706191100832	-47.67	12.13	4.27	-5.28	0.06	
Kersey Karate	BB	UK222596200980	-47.79	8.67	3.28	-2.22	0.04	
Kersey Kingpin	BB	UK222596701013	8.08	10.73	2.45	-4.66	0.01	
Silverwood Main Man	BB	UK942210313797	-5.37	1.54	0.94	1.72	0.00	YES
Maidenlands Marshall	BB	UK104493500509	7.83	10.06	1.20	-2.50	0.01	
Kelowna Mojo	BB	UK102530700939	10.67	11.54	3.39	-4.88	0.00	YES
Netherhall 1 Oz Daffy M024	HER	UK103719202024	-24.48	-10.68	-0.69	2.86	0.01	YES
Elite Lacette	LIM	IE221062721390	4.21	-0.41	2.39	-1.82	0.00	YES
Tomschoice Jet	LIM	UK124148100307	9.84	9.19	4.73	-3.02	0.00	
Golf	CH	FR4241721964	-7.32	7.00	2.55	-3.67	0.00	

FOR FURTHER DETAILS, PLEASE SEE <https://ahdb.org.uk/knowledge-library/national-beef-evaluations>

NORTH TEAM

Andy Hales Regional Sales Manager	07818 573379
Alan Robson	07554 401234
Andrew Howie	07977 281073
John Howie	07977 281074
Jenny Murtagh	07736 291226
Richard Lapthorne	07794 657040
Michael Stobbart	07889 807969
William Salt	07855 506136

CENTRAL TEAM

Andy Hales Regional Sales Manager	07818 573379
David Heath	07791 045427
James Joule	07519 120671
Jemma Lindley	07710 093064
Phil Wynn	07889 538859
Robert Davies	07939 333141

NORTHERN IRELAND

Ashley Fleming Regional Sales Manager	07775 561823
Adrian McPhillips	07919 553968
Edwin Black	07710 968305
Stephen Shanks	07972 704738
Jamie Sproule	07827 304010
Jamie Farry	07593 452116
Jonathan Kelso	07719 524123
Paul Murtagh	07775 935221

COGENT PRECISION MATCH EVALUATORS

Christina Straathof	07989 219683
Amy Hall Brown	07718 210066
Katie Evans	07531 648419
Phil Wynn	07889 538859
Kevin Rickard	07800 534621
Jamie Sproule	07827 304010

COGENT PRECISION SERVICES

Gary Pleavin Precision Operations Manager	07841 340361
Michael Jones Precision Technical Manager	07584 238635

SOUTH TEAM

Graham Higgott Regional Sales Manager	07787 283117
Chris Horton	07813723677
David Willcox	07827 243249
Lisa Hopwood	07772 976935
Martin Ley	07818 573481
Amanda Clements	07711 593941
Mike Potter	07772 202045
Sarah Robertson	07519 120676
Stuart Bright	07531 244135
Sophie Herd	07936 964890
Cari Thomas	07711 590979
Tom Boxall	07936 964958

COGENT CYMRU

Graham Higgott Regional Sales Manager	07787 283117
Al Call Up	01495 753555
Sian Jones	07972 534303
Samantha Alexander	07719 524082
Kevin Rickard	07800 534621
Dafydd Williams	07719 524078
Philip Douch	07593 452115

INTERNAL SALES

Jane Winters Internal Sales Manager	01829 773435
Catherine Perelli	01829 773425
Carla Madeley	01829 773421
Chloe Evans	01829 773422
Emma Minshall	01829 773493
Lisa Boughey	01829 773420
Olivia Butler	01829 773426

BUSINESS DEVELOPMENT

Ben Hogg National Business Development Manager	07566 778600
John Smout North Business Development Manager	07843330605
Megan Middleton South Business Development Manager	07719 511692

THE TRAIT LEADERS

The Cogent Beef sires that feature in these trait leader tables are Proven bulls that have been ranked according to their EMI, MVI, calving ease and gestation length scoring. These rankings are highlighted to enable you to make comparisons between bulls and to allow you to select the most suitable beef genetics for your herd.

NATIVE EASE OF MANAGEMENT IMPACT (£EMI)



1	QUAKER HILL DEAD CENTER	85.78
2	BLACKHAUGH BLACKCAP	74.82
3	MORVEN MR ALBERT	65.22
4	MELVIEW GREGOR	61.74

NATIVE GESTATION LENGTH



1	QUAKER HILL DEAD CENTER	278
2	BLACKHAUGH BLACKCAP	278
3	MORVEN MR ALBERT	279
4	MELVIEW GREGOR	280

NATIVE MARKET VALUE IMPACT (£MVI)



1	NETHERHALL JACK	27.2
2	QUAKER HILL DEAD CENTER	19.17
3	RAWBURN BLACKBUSH	18.34
4	NETHERHALL 1 OZ DAFFY	17.34

NATIVE CALVING EASE



1	NETHERHALL JACK	1
2	QUAKER HILL DEAD CENTER	1
3	RAWBURN BLACKBUSH	1
4	NETHERHALL 1 OZ DAFFY	1

#SHOUTABOUTT

CONTINENTAL EASE OF MANAGEMENT IMPACT (£EMI)



1	KERSEY NEWTON	78.32
2	KERSEY KARATE	73.62
3	SPRINGHILL LALA	69.72
4	KERSEY NICKEL	66.88

CONTINENTAL GESTATION LENGTH



1	KERSEY NEWTON	278
2	KERSEY KARATE	279
3	SPRINGHILL LALA	279
4	SPRINGHILL IMPROVEMENT	280

CONTINENTAL MARKET VALUE IMPACT (£MVI)



1	SPRINGHILL IMPROVEMENT	17.17
2	TANAT JACK DANIELS	14.1
3	AUCHENLAY HITMAN	10.01
4	AUCHENLAY JUDGE	9.48

CONTINENTAL CALVING EASE



1	AUCHENLAY JUDGE	1
2	KERSEY NICKEL	1
3	KELOWNA MOJO	1
4	KERSEY NIMROD	1

HESIRE

TAKING OUR INDUSTRY HIGHER WITH 

REGISTERING ALL SIRES ON BCMS HELPS US TO
PROVIDE MORE DATA ON THE SIRES YOU CHOOSE.

PRIMESTART COLOSTRUM

A complete replacer for the newborn calf



European Derived High Health
Status Colostrum Ingredient:

**FREE
FROM**



TB



EBL



IBR



JOHNES

Give Your Calves The Best Start To Life

FREEPHONE: 0800 783 7258

www.cogentuk.com

